

## Overview

Busbridge Central is a project that will provide new services and facilities, supporting and strengthening our community for generations to come.

Busbridge and Hambledon Church is engaged in a wide range of activity across our community from The Ark and ABC Toddler Groups for young children through to Prime Time for our mature generation; from Sceptics' Breakfasts to Hearing Aid Clinics. The church is blessed with steady growth, and looking ahead our current facilities will not allow us to effectively pursue our vision of *'Loving God, Making Disciples, and Transforming Communities'*.

The new buildings of the Busbridge Central development will establish a vibrant campus in the heart of Busbridge, providing outstanding facilities for both church and the community. We are in the early stages of the project, and welcome your participation and feedback as we shape how the new facilities could best serve the needs of you, your family and our community.

*'Time to unlock the potential for  
God's life-changing work in our  
community'*



Busbridge Church

## Busbridge Central is an investment by the church in its local community

### OUR OBJECTIVES

#### Secure

The long-term future of the existing church and its service to the local community and schools

#### Provide

Much-needed facilities for the development of local activity and outreach programmes

#### Include

A new auditorium, flexible hall, meeting rooms, offices and a café that offer a wide range of new opportunities to the whole community in Busbridge, Godalming and the surrounding area

## Prior Attempts at Expansion

A number of options have been looked at over the past 30 years, to expand the physical capacity and facilities of the church.

These have included re-ordering, extending or the construction of new church buildings on alternative sites.

None of these options have been deliverable and the capacity challenges remain.

## History and Needs

Busbridge Church has been a central part of the local community since it was built in 1867, when the local population stood at 342. In the seven generations since then, the population has increased ten-fold while the facilities at the church have remained largely unchanged.

Despite providing six services over three sites, the church building is no longer large enough for the main Sunday service and cannot cope with the demand at the major Christian festivals, when up to 1,000 people can try to attend key services.

We have also identified a pressing need for a range of facilities to serve the local schools and community, which could respond to a number of social needs. The high-density residential development currently taking place around Godalming, notably on the boundary of our parish at Milford Hospital and at Godalming College, further highlights the need for supporting infrastructure. Busbridge Central will be an important part of that response.

The recent introduction of accessible ramps linking the existing church with the surrounding roads has seen a significant increase in movement across the church site, further highlighting the opportunity for the church to reach out and engage with a wider cross-section of the local community.

## Potential Ministry Development

### 1. Educational

Improving and developing new resources for our three local schools and widening the educational opportunities for all ages including adult education. Providing additional sports facilities both for the local schools and also for the community. We shall explore the potential for strategic links with groups such as Holloway Hill and Sport Godalming

### 2. Pastoral Care

Enhancing our outreach and ministry including home visiting and offers of practical support and care for Busbridge residents. Using Busbridge Central as a visible contact point for drop ins, counselling, and coordination of home visits and hospitality

### 3. Community Building

Providing entertainment including events, concerts, films, seminars and debates

### 4. Health Care

Enhancing our resources for the elderly (currently hearing aid clinics, health checks and befriending and dementia care). Additional resources could include foot care, dietician advice, counselling (including alcohol and substance abuse), health promotion services and stress management workshops

### 5. Cultural and Heritage

Celebrating the historic local links with Gertrude Jekyll and Edwin Lutyens, and the Arts and Crafts heritage of the existing building (William Morris, Burne Jones). Highlighting resources pertinent to genealogy, archiving and local history

### 5. Outreach to the Disadvantaged

Links with local food bank, The Cellar and networking with other caring organisations within the town of Godalming



## 2015 Surveys

### Topographical

Documented the dimensions and elevations across the site

### Arboricultural

Identified trees in 4 different grades of importance. Our intent is to retain tree coverage

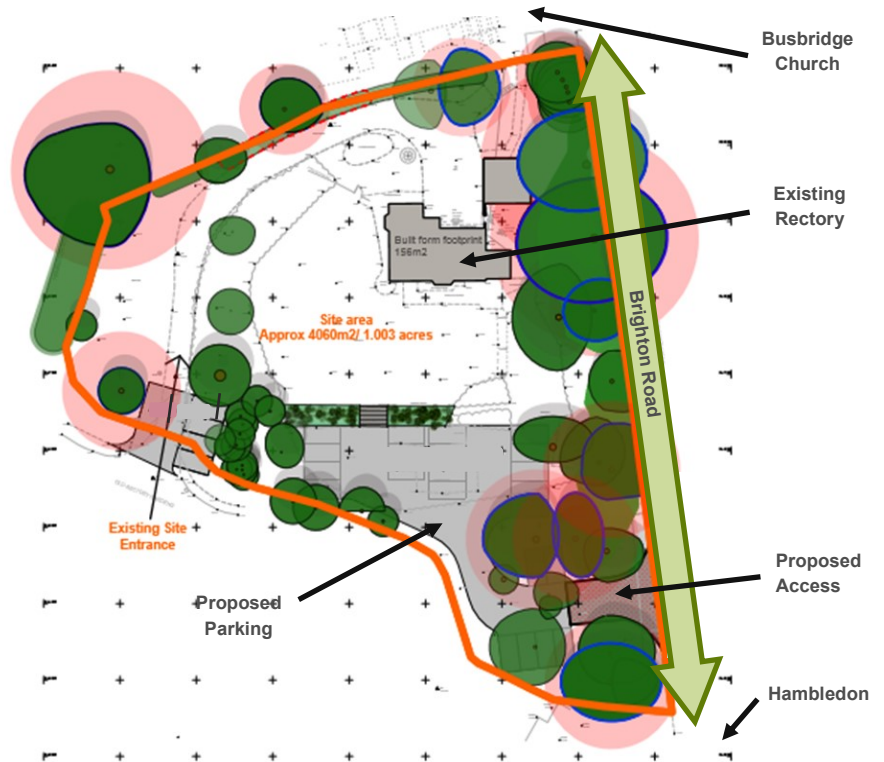
### Traffic & Parking

Studied Sunday service parking and Brighton Road traffic. We plan to supplement existing parking for cars and bicycles

### Planning

Submitted a pre-application for planning, and received feedback from Waverley Council

## Building Preparation



## Site Summary



## Initial artists impression

# Who's Who

## The Busbridge Central team



**Mark Williams**  
*Churchwarden*



**Michael Stubbs**  
*Prayer*



**Julie Nelson**  
*Team Coordination*



**Darren Montgomery**  
*Marketing & Comms*



**Souheil Haddad**  
*Finances*



**Janine Bailey**  
*Local Engagement*



**Tom Jones**  
*Building*



**Rosie James**  
*Fundraising Event  
Coordinator*



**Mike Hardy**  
*Funding & Finance*



**Debbie Scott**  
*Fundraising Event  
Coordinator*

## Contact Us

For more information,  
to offer your suggestions  
or help:

Busbridge & Hambledon  
Church  
Brighton Road,  
Godalming  
Surrey, GU7 1XA

Tel: 01483 421267

busbridgecentralteam  
@bhcgodalming.org

Visit us on the web at  
[www.bhcgodalming.org/  
building](http://www.bhcgodalming.org/building)

## What's Next

- Please **CONTACT US** if you'd like to find out more, tell us about your organisation, personal or family needs, or voice any concerns you may have
- Join us for **OPEN MEETINGS** at Busbridge Church on Wednesday 6<sup>th</sup> April at 7:30 pm and Sunday 10<sup>th</sup> April at 4:00 pm
- Complete the **SURVEY** to help us build a picture of local needs. We are distributing paper copies, or if you prefer to complete the survey online go to [www.bhcgodalming.org/survey](http://www.bhcgodalming.org/survey)
- Our church members will continue to run a series of fundraising activities—get involved!
- And of course, you're welcome to join us at any of our regular weekly services—meet the team

**Thank you for all your support!**

**UNLOCKING THE POTENTIAL**  
*for God's life-changing work in our community*

**BusbridgeCentral**